

Cinco cosas a saber si piensas que su hijo/a es Lesbiana, Gay, Bisexual o Transgénero (LGBT)

- 1. Usted no está solo.** Más de 16% de familias tienen un miembro que es LGBT.
- 2. Ser LGBT no es una fase, preferencia, o enfermedad.** Es simplemente una variación de la condición humana, como ser zurdo.
- 3. Rechazar a su hijo por ser LGBT, lo pone a más riesgo.** Puede ser seguido por la tendencia hacia conductas arriesgadas, como escapándose, el abuso de sustancias ilegales, trabajo sexual, depresión y el suicidio.
- 4. Un adulto digno y compasivo puede hacer toda la diferencia para un niño.** Permita que esa persona sea usted. Ame, apoye y ábrase a su niño.
- 5. Los padres de niños LGBT también necesitan apoyo.** Obtenga ayuda y apoyo en:

Centro Para Lesbianas y Gays de Los Angeles
Servicios para familias
323-860-7330
www.laglc.org

Bienestar
East LA 323-727-7896
South LA 323-752-3100
www.bienestar.org

Minority AIDS Project
323-936-4949 Ext. 110
www.map-usa.org

Padres, Familias y Amigos de Lesbianas y Gays
888-PFLAG 88
310-500-8645 (Español)
www.pflagla.org

Metropolitan Community Church
323-669-3434
www.mccla.org

Congregation Kol-Ami
323-606-0996
www.kol-ami.org

Archdiocese of L.A.
213-947-4907
www.archdiocese.la/ministry/mlgc/

Para mas información:

www.PreventLGBTChildAbuse.org

www.PreventLGBTChildAbuse.org

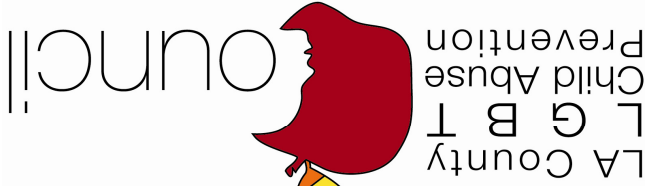
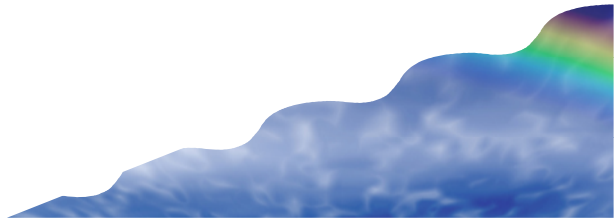
West Hollywood, CA 90046

P.O. Box 46759



Our mission is to promote the safety and well-being of Lesbian, Gay, Bisexual and Transgender youth and Families in Los Angeles County

www.PreventLGBTChildAbuse.org



Mission – Promote the safety and well-being of LGBTQ youth and children in Los Angeles County, and facilitate their transition to early adulthood by educating communities, parents, families, caregivers, and mandated reporters about sexual orientation and gender identity.

Vision – For all youth and children in Los Angeles County to be safe and affirmed in their sexual orientation and gender identity/expression.

What We Do

Outreach and Connection Tools – Provide an electronic community calendar for local LGBT groups and organizations to inter-connect by posting meetings, events, political actions and fundraisers. Resources and links specific to protecting LGBT children and youth from abuse and neglect are available through our website.

Service Coordination – Work to coordinate the county-wide network of LGBT children and youth service organizations, including advocacy projects, events, and trainings.

Training – Provide trainings for LA County based social service, juvenile justice, and educational organizations. This may include collaborations with local Speakers Bureaus.

Development & Funding – Conduct and/or collaborate on fundraising efforts, and continuously seek out grant opportunities to supplement the annual CAPT allocation.

Needs Assessment – Conduct environmental scans and needs assessments of the social service sector related to resources and services for LGBT children and families.

Conferences – Collaborate with community agencies to provide conferences for social service providers working with LGBT youth and families, and participate at other conferences with local and regional community partner(s) as requested.

Advocacy and Outreach – Develop and distribute published articles, public advertisement/announcements or brochures, such as the “Five Things to Know” card and the Family Magazine article on gender non-conforming children in 2009.

1. You are not alone. Over 16% of families have a member who is LGBT.

2. Being LGBT is not a phase, choice, or illness. It is simply a natural variation of the human condition, like being left-handed.

3. What would it take to stop loving your own child? Rejecting children for their sexual orientation or gender identity can have many disastrous outcomes, including depression, substance abuse, school failure, running away, and even suicide.

4. Just one trustworthy, supportive adult can make all the difference for a child. Let that person be you. Love, support and embrace your child.

5. Parents of LGBT children need support too. Resources are available at:

Los Angeles Gay and

Lesbian Center

East LA 323-727-7896

South LA 323-752-3100

323-860-7330

www.lagaycenter.org

Parents, Family and Friends

of Lesbians and Gays

888-PFLAG 88

310-500-8645 (Español)

www.pflagla.org

Metropolitan

Community Church

323-669-3434

www.mccia.org

Congregation Kol-Ami

323-606-0996

www.kol-aml.org

213-947-4907

www.archdiocese.la/ministry/miqc/

www.PreventLGBTChildAbuse.org

For more information, please contact :

Five Things to Know If You Think Your Child is Lesbian, Gay, Bisexual or Transgender (LGBT)